



# T Series 4x8, 5x10

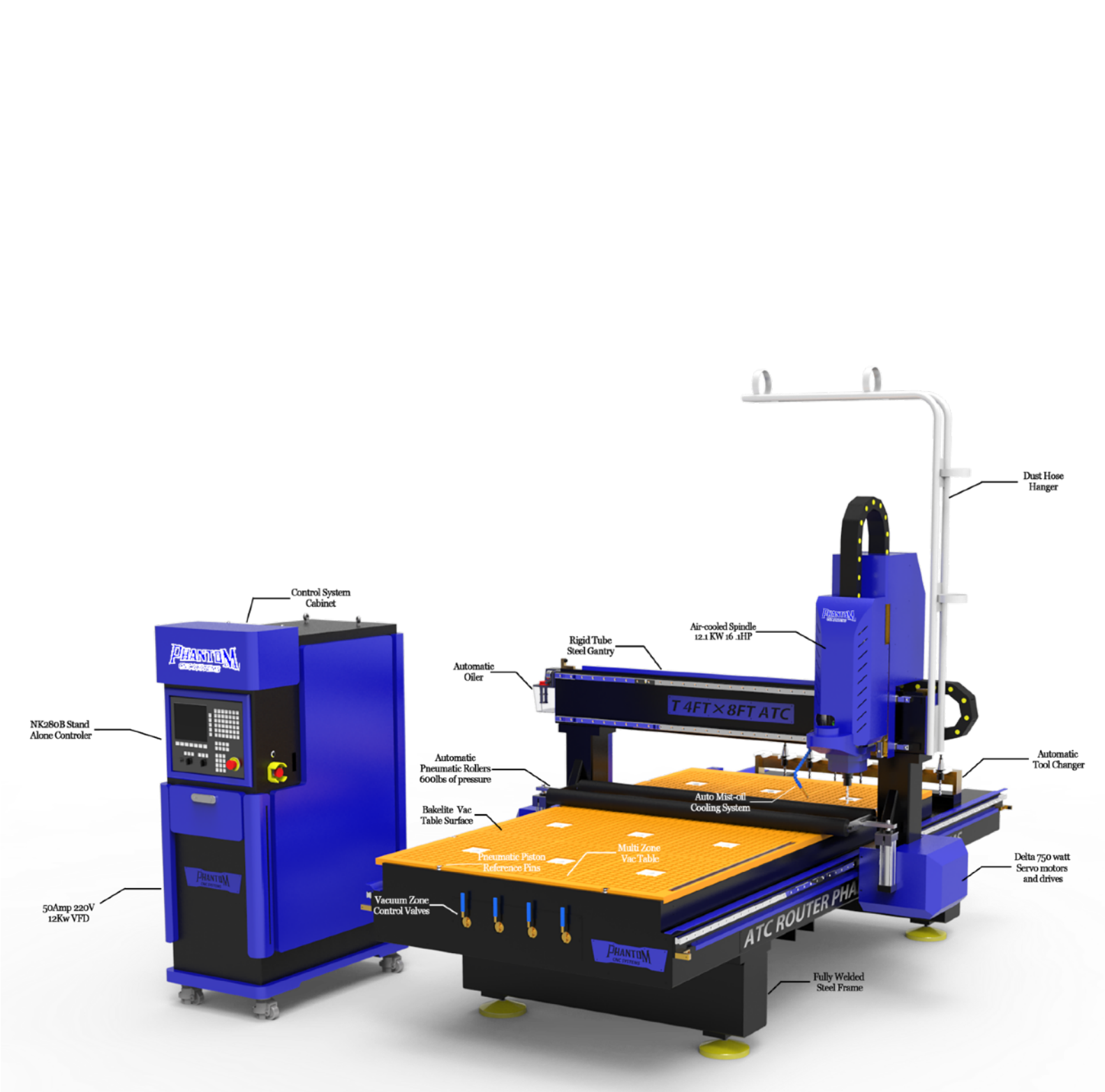
**\$34,500 4x8**

**\$37,500 5x10**

*\*Vacuum Pumps and Dust Collector Sold Separately*

This is our T series 4'x8' or 5'x10' CNC with full Auto Tool Changer. Complete with Multi-Zone Vac Table, Auto-Oiling System, Automatic Pneumatic Rollers, Air Cooled Spindle and Welded Frame to provide the best cutting experience and accuracy.

|                          |  |
|--------------------------|--|
| Machine Voltage          | 220V 1PH 3 Wire 60HZ 50 Amp  |
| Working area             | X Y axis: 4ft x 8ft, 5ft x 10ft, or Custom<br>Z axis: 11.8 inch                                |
| Vacuum Table             | Bakelite Vacuum Table Surface<br>Multi-Zone Vac Table<br>T-Slot Clamping Table                 |
| Reference Pins           | Pneumatic Piston Reference Pins  |
| Machine Structure        | Fully Welded Steel Frames  |
| Spindle                  | Air cooled spindle 16.1 HP VFD   |
| Tool Cooling             | Oil-Mist Cooling System  |
| Inverter                 | 220V Single Phase 4.5KW  |
| Motion Supports          | Linear guide XZ<br>Linear guide Y<br>Ball screw Z<br>Rack 1.25M Taiwan J&T /Rack has dustcover |
| Motor and Drive          | Delta 750watt Servo Motors   |
| Control System           | Pendant Control System for easy controls   |
| Auto Tool Changer (ATC)  | Pneumatic 8 Tool Changer   |
| Pneumatic Rollers        | Automatic Rollers with 600lbs of pressure  |
| Tool Sensor              | Touch probe for Z axis zero  |
| Lubrications System      | Manual Lubrication system with pump  |
| Vacuum Rotary Vane Pumps | 30 Amp 220V Single Phase   |
| Machine Weight           | 3000 (4x8) 3200 (5x10) lbs   |



Control System Cabinet

NK280B Stand Alone Controller

50Amp 220V 12Kw VFD

Automatic Oiler

Automatic Pneumatic Rollers 600lbs of pressure

Bakelite Vac Table Surface

Pneumatic Piston Reference Pins

Vacuum Zone Control Valves

Rigid Tube Steel Gantry

Air-cooled Spindle 12.1KW 6.1HP

T 4FT X 8FT ATC

Auto Mist-oil Cooling System

Multi Zone Vac Table

ATC ROUTER PHA

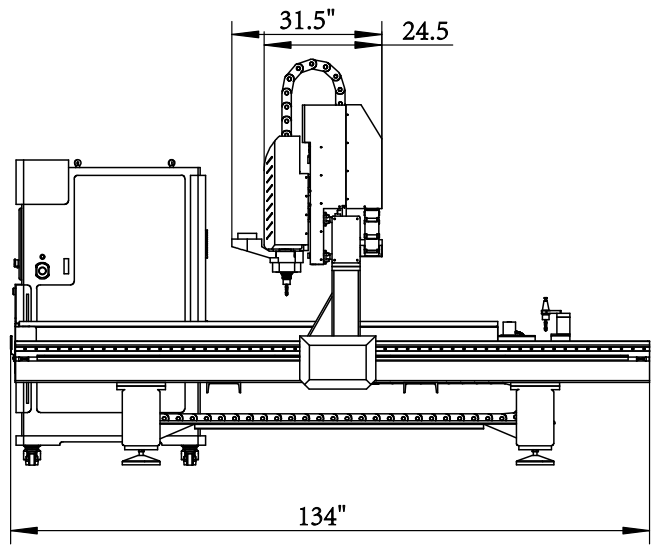
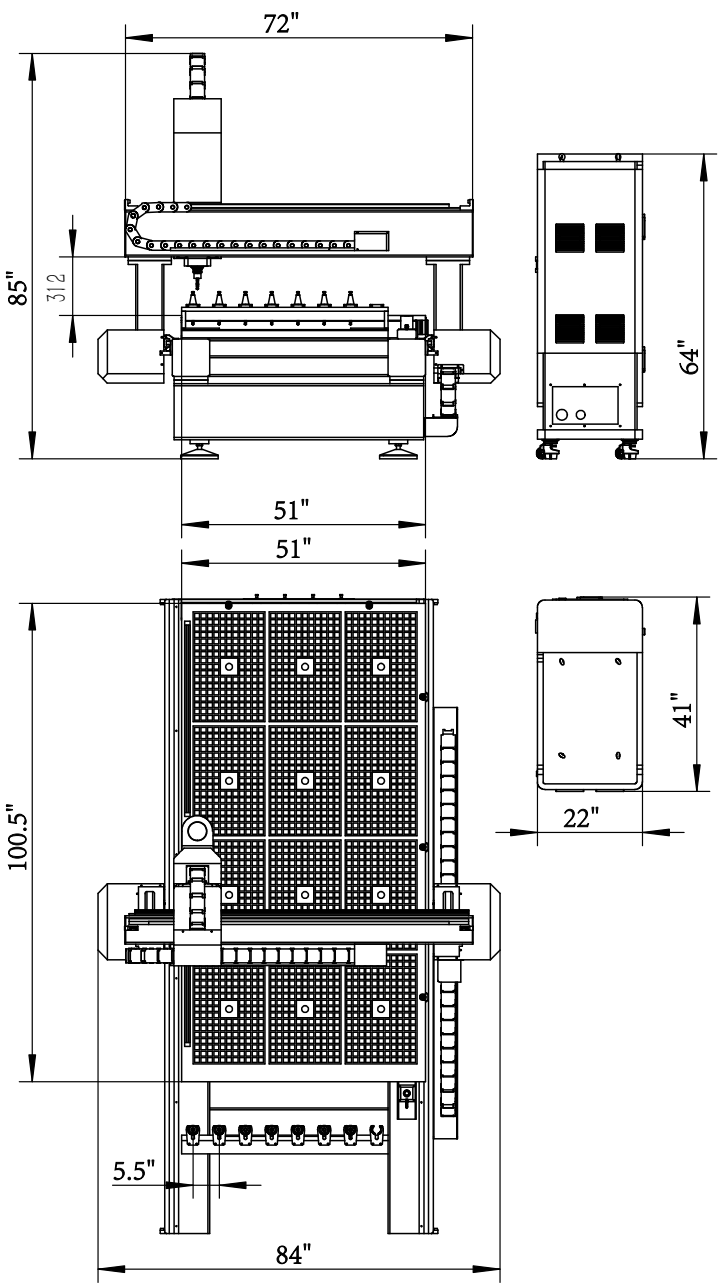
Fully Welded Steel Frame

Dust Hose Hanger

Automatic Tool Changer

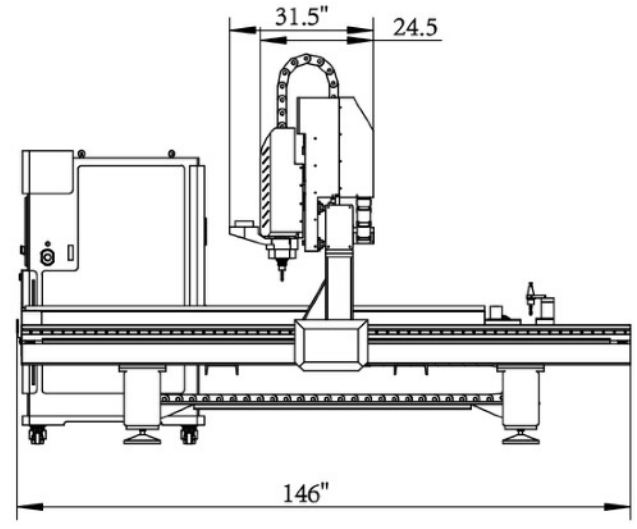
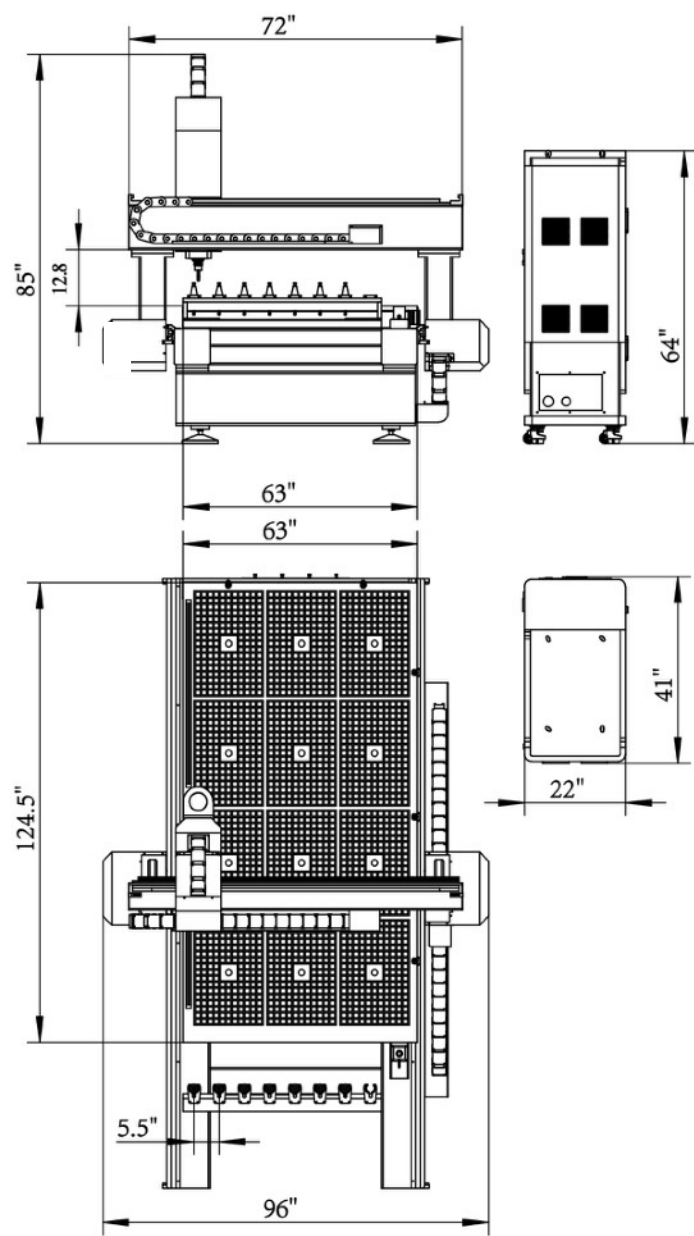
Delta 750 watt Servo motors and drives





**PHANTOM**  
CNC SYSTEMS

**T Series 48**  
4'x8' Floor Plan



**PHANTOM**  
CNC SYSTEMS

**T Series 510**  
5'x10' Floor Plan

## Shipping:

Shipping costs will vary based on shipping address and current carrier rates. Call or email us for up-to-date rates.



**Phantom CNC  
Systems has  
teamed up with**



**PRICE OF \$279**

**Is a CNC intimidating to  
you?**

**Are you just diving into the world of CNC or struggling with  
running your machine or program?**

**This is by far the best way to learn your CNC and software. CNC's  
can seem like a lot, but these step-by-step video lessons take all  
the pressure off!**

**Purchase of the Learn Your CNC  
package gives you lifetime  
access to the VCarve Master  
Training Course.**

## Dust Collector

The double bag dust collector is powered by 220v single phase power and provides hours of operation between having to empty the bags. The 4 inch port on the SC and the dust collector helps keep a clean and safe work environment.

**\$650**



## Vacuum Pumps

The 2.2KW Rotary Vane Pumps are big power in small packages. One pump is more than enough to handle the SC machine. These are powered on a 30 amp 220v single phase line. No 3 Phase is needed!

**\$750 each**





# Contact:

**Steven Wallace**

CEO

(252)259-4484

[steve@phantomcnccsystems.com](mailto:steve@phantomcnccsystems.com)

[@phantom\\_cnc\\_systems](https://www.phantom_cnc_systems.com)

[www.phantomcnccsystems.com](http://www.phantomcnccsystems.com)

**Tom Klontz**

Owner, Treasurer

(252)402-8711

[tom@phantomcnccsystems.com](mailto:tom@phantomcnccsystems.com)

[www.phantomcnccsystems.com](http://www.phantomcnccsystems.com)

**Izzy Swan**

Dealer/Content Creator

(864)501-8126

[izzy@izzyswan.com](mailto:izzy@izzyswan.com)

[@izzyswan\\_woodworking](https://www.izzyswan_woodworking.com)

[www.izzyswan.com](http://www.izzyswan.com)

**Nick Leonard**

Phantom CNC Dealer/Content Creator

(910)986-1065

[@statedwoods](https://www.statedwoods.com)

[nick@phantomcnccsystems.com](mailto:nick@phantomcnccsystems.com)

[www.statedwoods.com](http://www.statedwoods.com)